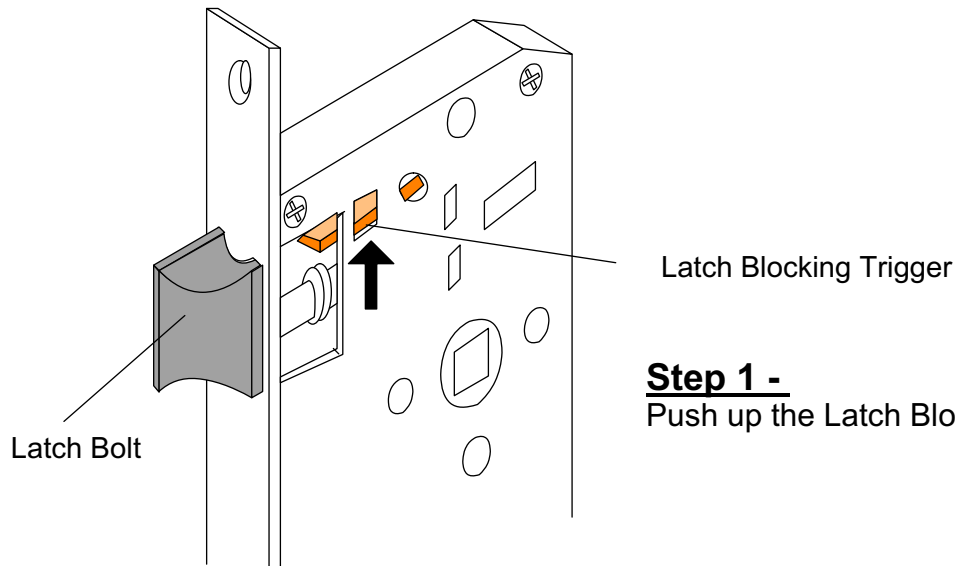


Service Menu Handing Rotation for series E308 Narrow Backset Euro Mortise Lock Cases

**For models
E308-25 E308-30 E308-35 E308-40 E308-50**

The handing of the Spring Latch of the Baton Series 'E300' Narrow Backset Euro Mortise Lock Cases are field-reversible. **Removing the case cap to change the handing is not necessary.** Please follow instructions to rotate the Spring Latch. No tool is required.



Step 1 -
Push up the Latch Blocking Trigger

Step 2 -
Press the Spring Latch Bolt down/past the the Armor Front to rotate the Latch Bolt for 180 degrees; and then release spring tension and snap Latch Bolt back to its working position in slot.

